



# Endo G-L1 Polyclonal Antibody

<b>Catalog No</b>	YP-Ab-02633
<b>Isotype</b>	IgG
<b>Reactivity</b>	Human;Rat;Mouse;
<b>Applications</b>	WB;ELISA
<b>Gene Name</b>	EXOG
<b>Protein Name</b>	Nuclease EXOG mitochondrial
<b>Immunogen</b>	The antiserum was produced against synthesized peptide derived from human ENDOGL1. AA range:171-220
<b>Specificity</b>	Endo G-L1 Polyclonal Antibody detects endogenous levels of Endo G-L1 protein.
<b>Formulation</b>	Liquid in PBS containing 50% glycerol, 0.5% BSA and 0.02% sodium azide.
<b>Source</b>	Polyclonal, Rabbit,IgG
<b>Purification</b>	The antibody was affinity-purified from rabbit antiserum by affinity-chromatography using epitope-specific immunogen.
<b>Dilution</b>	Western Blot: 1/500 - 1/2000. ELISA: 1/40000. Not yet tested in other applications.
<b>Concentration</b>	1 mg/ml
<b>Purity</b>	≥90%
<b>Storage Stability</b>	-20°C/1 year
<b>Synonyms</b>	EXOG; ENDOGL1; ENDOGL2; ENGL; Nuclease EXOG; mitochondrial; Endonuclease G-like 1; Endo G-like 1
<b>Observed Band</b>	41kD
<b>Cell Pathway</b>	Mitochondrion inner membrane .
<b>Tissue Specificity</b>	Ubiquitous.
<b>Function</b>	cofactor:Divalent metal cations.,function:Endo/exonuclease with nicking activity towards supercoiled DNA, a preference for single stranded DNA and 5'-3' exonuclease activity.,miscellaneous:The active site contains 1 hydrated divalent metal cation that has only 1 direct interaction with the protein; all other interactions are via water molecules.,similarity:Belongs to the DNA/RNA non-specific endonuclease family.,subunit:Homodimer.,tissue specificity:Ubiquitous.,
<b>Background</b>	This gene encodes an endo/exonuclease with 5'-3' exonuclease activity. The encoded enzyme catalyzes the hydrolysis of ester linkages at the 5' end of a nucleic acid chain. This enzyme is localized to the mitochondria and may play a role in programmed cell death. Alternatively spliced transcript variants have been described. A pseudogene exists on chromosome 18. [provided by RefSeq, Feb 2009],



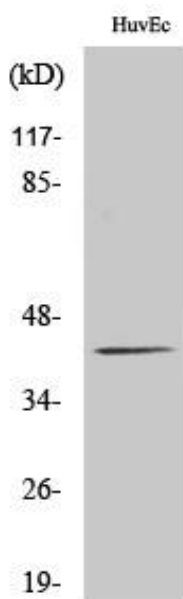
**matters needing attention**

Avoid repeated freezing and thawing!

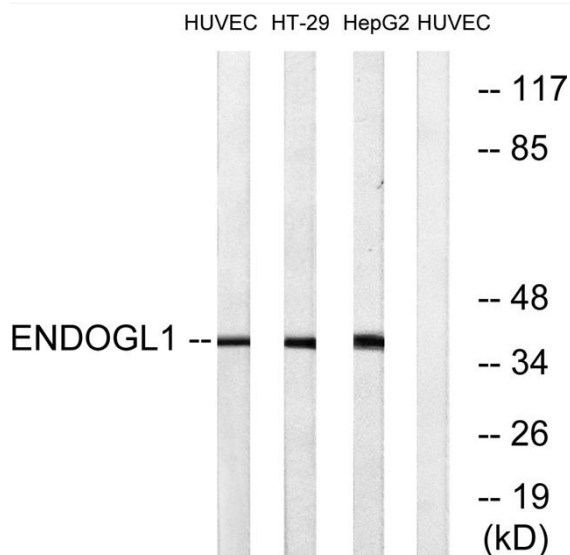
**Usage suggestions**

This product can be used in immunological reaction related experiments. For more information, please consult technical personnel.

## Products Images



Western Blot analysis of various cells using Endo G-L1 Polyclonal Antibody



Western blot analysis of lysates from HUVEC, HT-29, and HepG2 cells, using ENDOGL1 Antibody. The lane on the right is blocked with the synthesized peptide.